



3M™ Nomad™ Modular Matting 9200 Installation Instructions

These instructions supersede any verbal or written instructions from Greatmats representatives, and must be followed in order for the warranty to be in affect.

Delivery

- Accept delivery of materials only if they are in an unopened, undamaged packaging that bears the name and brand of the manufacturer or supplier, project identification and shipping and handling instructions.

Storage

- Store material in original packaging in a clean area protected from all weather and maintained at a minimum temperature of 55 degrees Fahrenheit.
- If material is distorted during storage or transporting, do not attempt to install it.

Materials and Accessories Required

- **Flooring:** 3M™ Nomad™ Modular Matting 9200 tiles (7.87" x 7.87")
- **Other:** Jigsaw, utility knife, straight edge three to four feet long, flathead screwdriver and measuring tape.

Installation

3M Nomad Modular Matting Tiles 9200 should only be installed into a recessed well. The recommended depth for the well is 0.472 inches or 12mm.

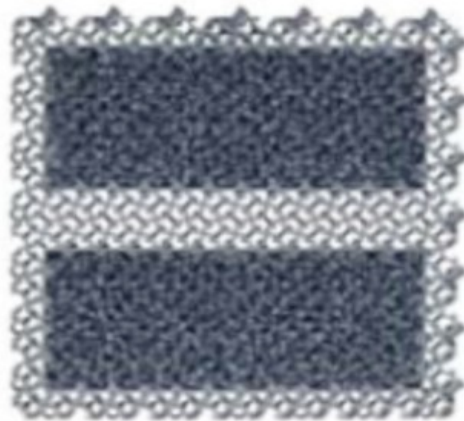
1. Remove the tiles from the box and allow the mats to be flattened at room temperature for at least 2 hours prior to installation to make sure there is no tilt on the corner of the mats.
2. Prior to the installation, the recessed well should be thoroughly cleaned and vacuumed to removed all the dust and dirt. Do not install on uneven or dirty surfaces.
3. Determine the total number of full tiles needed to fit into the recessed well by laying out the tiles in both length and width direction.
 - Make sure the correct number of tiles is available to cover the recessed well. There are 10 tiles in 1 case. Each case covers approximately 4.3 square feet.
4. If the tiles overlap the edges of the well, the determine which tiles will need to be cut.
 - It is recommended to cut tiles along both sides of the recessed well in the length and/or width direction to make it look even when installation is complete.
 - It is recommended to adjust the tiles to fit into the recessed well in order to minimize cutting.
5. 3M Nomad Modular Matting 90200 tiles can only be cut on the vinyl material. It is not

3M Nomad Matting Modular Tiles Installation Instructions Continued

recommended to be cut on the carpet inserts because the carpet inserts are not adhered to the vinyl material by adhesive. It is recommended to make cuts on the “side tiles” - tiles that are next to the edges of the recessed well. To ensure an even and clean cut, a jog saw is recommended.

6. Begin placing the tiles into the top left corner of the recessed well with the pegs along the top and right edges of the tile. (see image 1).

Image 1



7. The tiles should be installed from left to right, and top to bottom.

8. Lay the first row of tiles.

9. When laying the second row of tiles, place it directly below the first row, making sure the pegs are again along the top and right edges of the tile.

10. Continue laying the tiles into the recessed well until all your tiles are in place.

11. Before connecting the tiles, make sure the carpet inserts are positioned in the same direction on each tile.

12. Once the tiles are laid out, line up the pegs over the holes and begin pressing the pegs into the holes using your fingers or a screwdriver. (See image 2 and Image 3). You will hear a snap when the connection is securely in place.

- A screwdriver is preferred to accelerate the installation process and obtain a secure connection.

Image 2

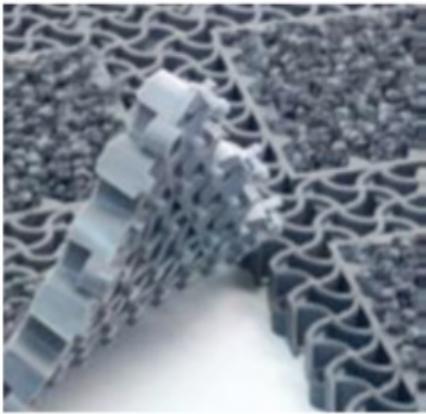
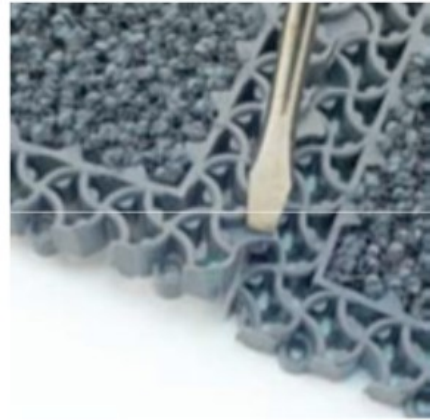


Image 3



13. Continue until all pegs are snapped into all holes.

14. Trim the tile edges with a utility knife if there are excess pegs or holes when the installation is complete.

Clean Up and Final Finish

- Dust mop or commercial vacuum to clear the area of debris and grit.
- Upon completion of the job, the end user shall sign a Job Completion Ticket.

Maintenance Instructions

Initial Cleaning and Daily Cleaning

1. Vacuum (with heavy duty commercial vacuum) the floor to remove all dirt and grit. **This is the single most important maintenance activity for preserving the floor's appearance and performance – and typically the most overlooked and omitted.**
 - Use a heavy-duty commercial vacuum cleaner that features a rotary power brush or beater bar to remove deeply embedded dirt particles, especially in heavy traffic areas. Matting products release more soil when dry.

Weekly Cleaning

1. Remove matting from service.
2. Turn matting over and run beater bar, dry vacuum on backside of matting.
3. Pick up matting

3M Nomad Matting Modular Tiles Installation Instructions Continued

4. Clean debris/dirt from floor (sweep, vacuum, damp mop, etc.)
5. Place matting back in service and vacuum top surface of matting.
 - Use a heavy-duty commercial vacuum cleaner that features a rotary power brush or beater bar to remove deeply embedded dirt particles, especially in heavy traffic areas. Matting products release more soil when dry.

As Needed

- **Spot Removal:** If a spill occurs, use a clean absorbent cloth or paper towel to absorb as much of the liquid as possible. Spray the stained area with an all purpose spot remover and rub the surface with a clean white cloth. Turn the cloth often to a clean side. Grease or oil based stains may require a citrus-solvent based spot remover. All-purpose citrus-solvent spot removers are available from your local janitorial supply store.
 - NOTE: Always test spot removers in an inconspicuous area of the mat.
- **Gum Removal:** Excess chewing gum should always be scraped off the mat with a standard putty knife. Chewing gum residue may require use of a citrus-solvent based spot remover or a chewing gum freezing chemical (aerosol) available at your local janitorial supply store.

Deep Cleaning

- Conduct deep cleaning as needed, when your routine cleaning is not meeting your expectations.
- 9200 Matting should be periodically deep cleaned by the Hot Water Extraction Method. Best results and quickest dry times will be achieved with a commercial truck-mounted system steam extraction machines. Extraction cleaning removes deeply embedded soils and should be performed as needed, based on your traffic count and soil level. A minimum quarterly extraction cleaning is recommended for high traffic applications, more often during the winter months in traffic lanes.
- An alternative method is to use a high pressure washer (self service car wash). After using high pressure washer, hang up mat. Wash thoroughly with an all-purpose cleaning solution. Rinse mat thoroughly. Let mat dry before returning mat to service area.

Greatmats.com
117 Industrial Ave.
Milltown, WI 54858
info@greatmats.com
877-822-6622
F: 715-825-4928